

## Quick Start Checklist

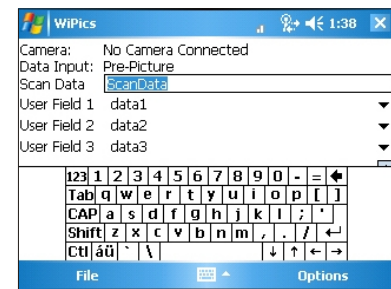
### Preparation:

- Insert a blank (formatted) memory card into Pocket PC device.  
**NOTE:** Wi-Pics Mobile! is shipped pre-configured to store images on Compact Flash memory, if using Secure Digital (SD) memory for image storage, adjust the Storage Location in the Global Settings of Wi-Pics Mobile! (See page 16 of the User Guide).
- Insert a blank (formatted) memory card into camera.  
**NOTE:** Any images residing on the memory card inserted into the camera will be automatically processed by the *Wi-Pics Mobile!*™ software.
- Power on Pocket PC device and *Wi-Pics Mobile!*™ software.
- Configure Global Settings, Data Association and Image Transmission preferences (See pages 16-25 of the User Guide).
- Attach *Wi-Pics Mobile!*™ bracket to Pocket PC device and adjust it to a comfortable position.



- Attach the *Wi-Pics Mobile!*™ cable to the Pocket PC device.
- Insert the USB end of the cable into the USB port on your camera.
- Power on the camera. *Wi-Pics Mobile!*™ software will automatically detect the connection to the camera.  
**NOTE:** Connecting the camera to the SoMo 650 before powering up the *Wi-Pics Mobile!*™ software may result in a “Unidentified USB Device error”.  
**NOTE:** Any existing images on the memory card in the camera will automatically be downloaded and processed by the *Wi-Pics Mobile!*™ software when the camera is connected to *Wi-Pics Mobile!*™.
- Verify your Data Association settings displayed on the Main Screen are correct.
- User Fields may be edited on the fly by highlighting the text in the User Field and using the stylus to enter new text.

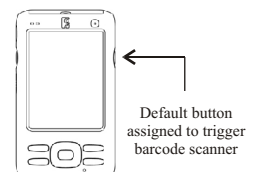
See Editing User Fields on the Fly on page 26 of the User Guide.



Editing User Fields on the Fly

### Shooting Images:

- If using an optional barcode scanner, insert the scanner into the Pocket PC device BEFORE starting up the *Wi-Pics Mobile!*™ software.
- Press the button assigned to trigger the barcode scanner, then scan a barcode. All images taken will be associated with the scanned barcode until a new barcode has been scanned. (Default button assignment for triggering barcode scanner is located on right side of Pocket PC). (See page 37 of the User Guide for information on Button Assignment).
- Shoot images. Images will be “moved” from the memory card in the camera to the memory card in the Pocket PC device. All data association information is applied to the image files. Image files are then transmitted to the destination folder specified in the Image Transmission settings.



### Changing Memory Cards:

- The *Wi-Pics Mobile!*™ software will display a message when only 10% of image storage space is remaining.
- Wait for *Wi-Pics Mobile!*™ to finish processing all current images before removing or replacing memory cards in Pocket PC device or camera.